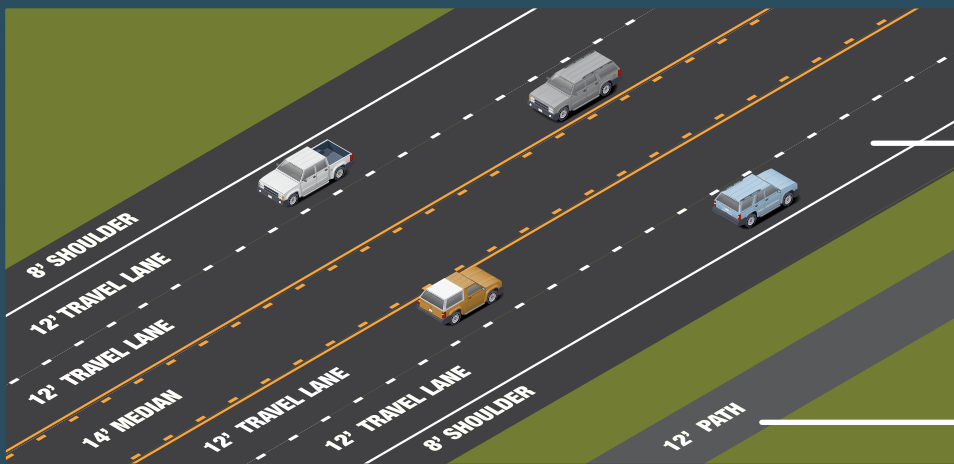


Figure ES.2 Preferred Alternative

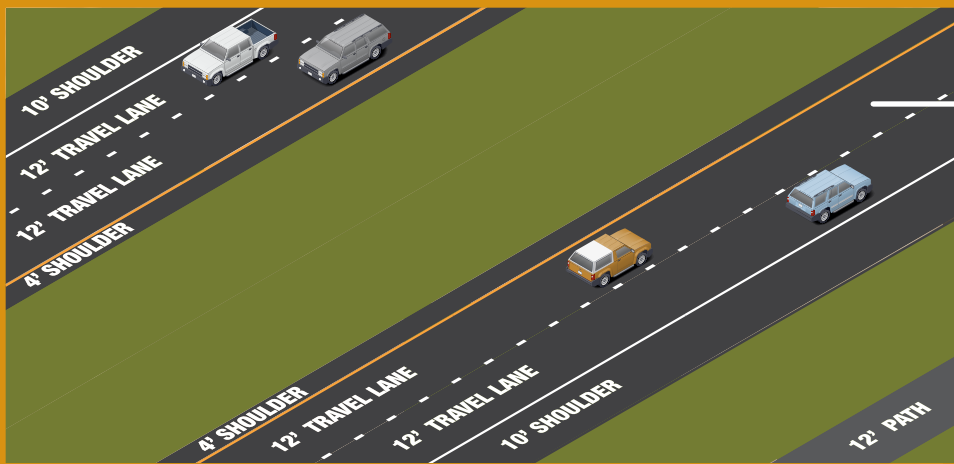
FOUR-LANE, ARTERIAL



New four-lane (two travel lanes in each direction) arterial between SR-112 and SR-36

Shared-use path along the alignment of Midvalley Highway

FOUR-LANE, GRADE-SEPARATED FREEWAY



New, four-lane (two travel lanes in each direction), grade-separated freeway between the end of the existing segment of Midvalley Highway and SR-112



LEGEND

- Existing Roads
- Preferred Alternative
- Union Pacific Railroad
- Signalized Intersection
- Interchange
- Future Intersection (to be built by others)
- Future Interchange (to be built by others)